

2016

JBL

CATALOGUE

POND



LANGUAGE



**VORSPRUNG
DURCH FORSCHUNG**
AHEAD THROUGH RESEARCH





Dear Pond Enthusiasts,

Because pond owners are not necessarily keen on doing lots of water tests, I am happy to say that with the new JBL ProScan, every pond enthusiast can now carry out a six fold water test using a smart phone, in only 60 seconds. The water analysis with a smartphone is really fun and very precise too.

Particularly helpful are the value analysis and trouble-shooting which are displayed after the water values. Using this innovation, effective pond care has just become a lot easier. It's worth putting to the test!

All the best,

Roland Böhme



Contents

Food	7-11	Technic	18-21	
For all species	Main food	7	UV-C water clarifier for garden ponds	19-20
For all species	Supplementary food	7	Air pumps & accessories	21
Sturgeon food	Main food	8		
Koi	Main food	10	Accessories	22-24
Koi	Supplementary food	11	Water test	22-23
			Miscellaneous	24
Care products	13-17	Promotion	26-27	
Water stabilising	13	Shopsystem	28	
Algaecide	14			
Limoiting nutrients	15			
Plant care	15			
Fish care	Medication	17		
Fish care	Water treatment	17		

YouTube For this product you'll find a video on the JBL web site and on YouTube.



New Products 2016

Technic	
JBL ProCristal – UV-C water clarifier	19
Accessories	
JBL ProScan – water analysis by smartphone	23



The JBL success story

From a 30 m² pet shop to a worldwide pond- and aquarium product specialist



It all began in Ludwigshafen in 1960 with a small pet shop, just 30 m² in size, which Joachim Böhme, a trained chemist from Dresden, opened and so made his hobby his job. His love of animals, his white lab coat as his working clothes, and his friendly manner as well as his specialist knowledge all contributed to his success.

His business grew and the pet shop evolved into a wholesale ornamental fish business. As fish diseases became a problem, Joachim Böhme put his studies to good use and developed a highly effective remedy against ectoparasites, which he named Punktol.

Up to the present day, JBL, under the leadership of Roland Böhme, the son of the founder, has expanded its range to over 1000 products for the aquarium, terrarium and garden pond and has established a position as a leading producer in this field, exporting to 65 countries around the world.

Using the latest production and filling plant, all JBL products are manufactured and dispatched in Neuhofen. The company site covers over 12,000 m² and includes not only the Production plant and the 6,500 m² Logistics Center completed in 2008, but also the Research Center. Here many fully stocked aquariums and terrariums operate on a permanent basis in order to test all the products under realistic conditions. In order to take the in-house tests to an even more stringent level, JBL cooperates with leading scientific institutions throughout Europe, such as the Leibnitz Institute for Marine Science in Kiel (IFM Geomar), the Department of Measurement and Laser Technology at the University of Ulm and the Haus des Meeres in Vienna.

In addition to the usual experiments and tests in the laboratory, JBL biologists have for many years now gained their insight into the habitats and life of the animals directly from nature in the course of JBL research expeditions and workshops. The protection of wildlife and environmental awareness are key factors for JBL. By means of a photovoltaic system installed on the roofs of the company buildings, JBL is able to generate sufficient electricity itself to meet the entire requirements of production. For many years JBL has been a supporter of the SHARK PROJECT, the largest international protection organization for sharks, as sharks are threatened with imminent extinction at the hands of man.



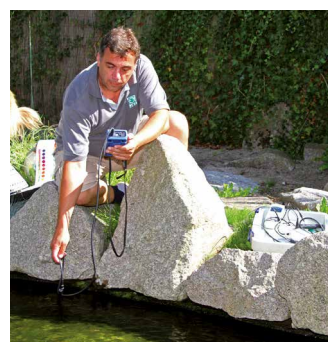
Garden Pond enthusiasts know that they can depend on the quality of JBL products and appreciate the new innovations which JBL regularly launches on the market.

Dr. Rainer Keppler, Director of Development at JBL states, "The best ideas don't originate from us! It's the pond enthusiasts, terrarium fans and sales staff who phone us and tell us their ideas. We then apply our knowhow to convert these often amazing ideas into products at acceptable prices."

Understanding Mother Nature. Ahead through research.

Garden ponds are different to natural ponds and lakes. These differences only become apparent through intensive research in natural waters and garden ponds. Based on these studies, the JBL research department started to develop products, to prevent the build-up of algae in garden ponds, to combat diseases and to keep the water crystal-clear. Laboratory work alone is not sufficient for garden pond research. It is the natural factors, such as leaves, rain and thunderstorms that show up the problem areas, which require further work.

JBL's research team has done a good job so far. With the current JBL product range, long-term care of pond fish, in crystal-clear ponds, is possible without any difficulties.



Feed your fish to health!

What's special about JBL's Pond Fish Food?

At first glance, pond fish and koi aren't that different from aquarium fish. Nevertheless their nutritional requirements do differ and strongly depend on their size and on the water temperature. The colder the water in the pond, the slower the metabolism of the fish is, with the result that both their digestion and their energy requirement become lower. Yet even in cold winters it never comes to a complete standstill, otherwise the fish would not survive. But in the warm season the metabolism accelerates and the energy requirement increases significantly. This interplay must be taken into account, e.g. by means of special food for the different seasons or additional aeration during the hot summer days. JBL has taken this into consideration and has developed a highly digestible pond fish food (JBL Pond Energil and JBL Koi Energil) for the cold season.

It is vitally important that the pond fish are fed as long as possible in the autumn and again very early in spring. This will leave the fish with enough energy reserves to survive the coldest season, whilst being fit and healthy. Adequate feeding in the autumn can prevent diseases, which can weaken the immune system the following spring! For the hot summer weeks, which are as exhausting for the pond fish as for us humans, JBL provides JBL Koi Summer specially formulated for koi.

The JBL research team has pooled all available scientific knowledge on the nutrition of the most common pond fish, such as Koi, goldfish and ornamental sturgeons and has drawn upon it to select the quality ingredients of the JBL food formulas. The JBL pond foods have been tested on fish at JBL's own ponds and also by external specialists. This practical research benefits your pond fish!



Packaging that is light-proof and resealable with well-conceived detailed solutions complements the high quality of the JBL products.



JBL PondSticks classic

Classic food sticks for pond fish

- Floating food sticks for garden pond fish during the warmer time of year
- Valuable plant fibres with vitamin complexes ensure a healthy digestive system and provide resistance to disease.
- High plant concentrations correspond to the natural diet of many pond fish and make the food easier to digest, thereby reducing water pollution.

Art. no.	Content	Weight	UP
41001	1 l	100 g	6
41002	5.5 l	550 g	1
41004	31.5 l	3200 g	1



JBL Pond Sticks 4in1
4 different sticks in one food

- The perfect all-round food for all pond fish longer than 15 cm. Red sticks: with carotenoids and shrimp for brilliant fish colours. Yellow sticks: wheat germ for vitality and growth.
- Green sticks: healthy vegetable diet.
- Black sticks: beta-glucane activates resistance to disease.
- 10 l size: practical refill bag with air-tight slider seal.

Art. no.	Content	Weight	UP
40145	1 l	160 g	6
40146	5.5 l	890 g	1
40153	10.0 l	1600 g	6
40147	10.5 l	1680 g	1
40148	31.5 l	5000 g	1



JBL PondFlakes
Flake food for pond fish

- Main food for all pond fish.
- Floating food flakes.
- For moderate and warm temperatures.
- Also suitable for smaller fish.

Art. no.	Content	Weight	UP
40195	1 l	130 g	6
40197	5.5 l	770 g	1
40199	10.5 l	1470 g	1



JBL PondColoron
Colour food sticks for all pond fish

- Main food sticks for all pond fish.
- Natural carotinoids and xanthenes enhance brilliant colouring.
- Valuable vegetable and animal raw materials add variety to the diet of fastidious pond fish.
- Balanced vitamin C and multivitamin complexes increase resistance to disease.

Art. no.	Content	Weight	UP
40190	1 l	440 g	6
41024	5.5 l	2400 g	1



JBL PondVario
Balanced mixture of flake food, sticks and crustacea

- Main food mix for all pond fish.
- Maximum acceptance due to crustaceans.
- Mixture of smaller and larger-sized ingredients make this food suited for all sizes of fish.
- 20% crustaceans provide balanced protein/ballast content meeting nutritional needs.
- Essential vitamins increase resistance to diseases.

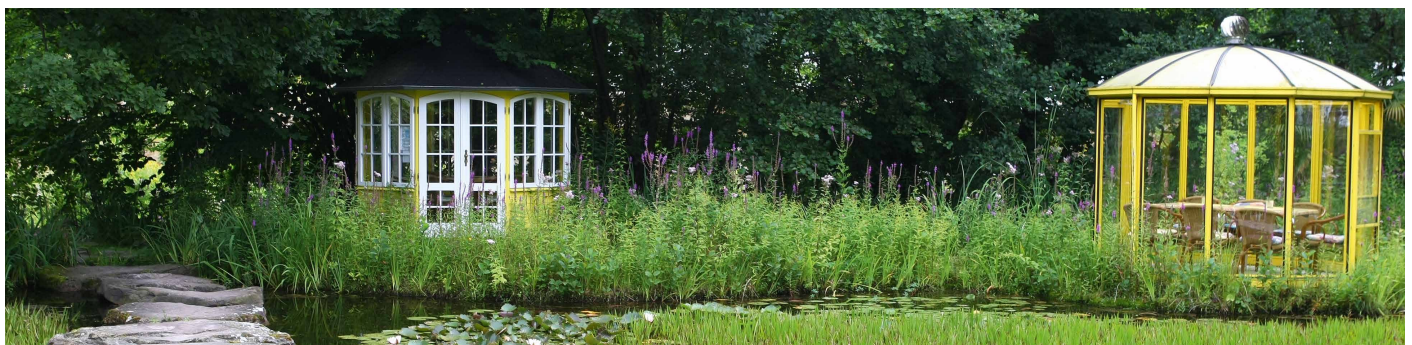
Art. no.	Content	Weight	UP
40290	1 l	130 g	6
40296	5.5 l	690 g	1
40298	10.5 l	1370 g	1



JBL PondEnergil
Food sticks for lower temperatures

- Energy-rich, easily digestible food for temperatures below 15°C.
- Fish oil covers the high need for unsaturated fatty acids.
- Reduced protein content as the fish do not grow in winter and need less protein.

Art. no.	Content	Weight	UP
41027	1 l	600 g	6
41028	5.5 l	3300 g	1





JBL PondSterlet

Sinking food pearls for sturgeon

- With high quality protein from aquatic animals.
- Specially designed to meet the nutritional needs of sturgeon.
- Stable in water, therefore accessible to the sloweating sturgeon over a long period in water without polluting the water.

Art. no.	Content	Weight	UP
40200	1 l	600 g	6
41035	5.5 l	3300 g	1



JBL PondSterlet XL

Sinking food pearls (6 mm) for large sturgeons

- High-grade proteins from aquatic animals and spirulina.
- Stable in water, resulting in long availability for slow-feeding sturgeons without polluting the water.
- Protein content formulated to meet the needs of larger (> 60 cm), slower growing sturgeons.
- Optimum protein-fat ratio of 4:1 ensures healthy growth with minimal water pollution and less algae as a result. Dermatologically tested for skin compatibility.

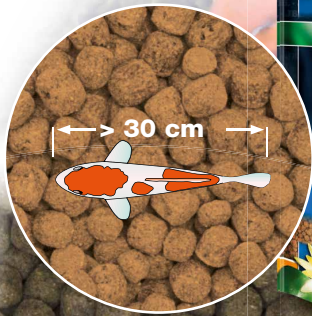
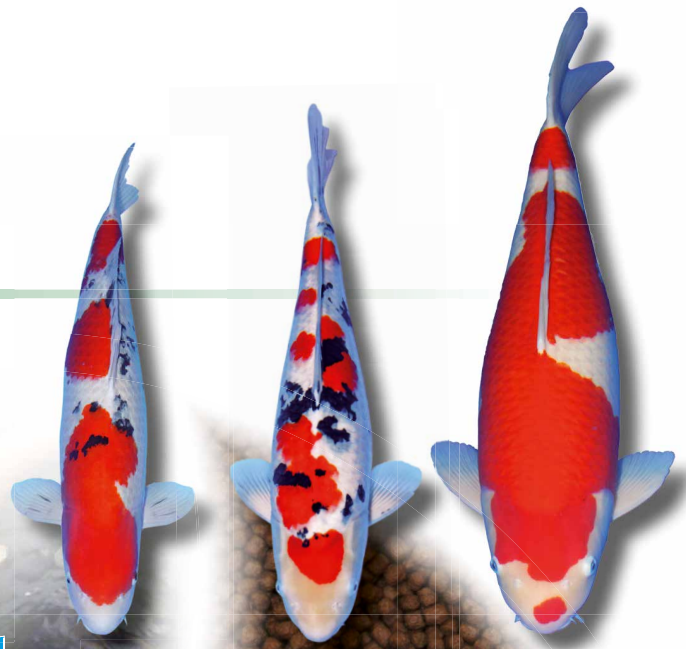
Art. no.	Content	Weight	UP
40309	5.5 l	3300 g	1



The JBL koi food concept

Koi have varying nutritional needs depending on their age. Young, fast-growing koi require a higher protein content than koi that are older and grow more slowly as a result. Aside from composition, the grain size is also important for species-appropriate intake of food.

That is why the packaging always indicates the size of the koi that the food is intended for.



Analytical composition:	
Protein	42 %
Fat content	10.5 %
Raw fibre	2 %
Crude ash	10 %

Analytical composition:	
Protein	38 %
Fat content	9.5 %
Raw fibre	2 %
Crude ash	10 %

Analytical composition:	
Protein	33 %
Fat content	8 %
Raw fibre	3 %
Crude ash	10 %





JBL Koi mini

Koi pellets for young koi (10-20 cm)

- The novel pearl shape ideally suits the size of mouth of young koi.
- The ingredients satisfy the needs of young koi, due to essential substances, energy carriers and vitamins.
- High vitamin content helps to develop the immune system.
- Well-balanced percentage of constituents of animal and vegetable origins.
- With adjusted protein to fat ratio of 4:1

Art. no.	Content	Weight	UP
41011	1 l	420 g	6
41012	5.5 l	2300 g	1



JBL Koi midi

Koi pellets for medium-sized koi (15-35 cm)

- Presentation and nutrient content tailored to the specific needs of medium-sized fast-growing Koi.
- Select protein carriers and appropriate fat content to ensure a balanced growth rate.
- 15 % wheat germ content, fish protein and 4 % fish oil, as well as spirulina algae, satisfy the nutritional needs of the fish.
- With adjusted protein to fat ratio of 4:1

Art. no.	Content	Weight	UP
41016	1 l	400 g	6
41017	5.5 l	2200 g	1



JBL Koi maxi

Koi pellets for large Koi (over 30 cm)

- High-grade food pearls with 10 % high-protein spirulina algae.
- Unsaturated fatty acids and carotenoids yield well-balanced growth and brilliant colours.
- Essential vitamins and stabilized vitamin C enhance the resistance to diseases.
- With adjusted protein to fat ratio of 4:1.

Art. no.	Content	Weight	UP
41020	5.5 l	2140 g	1
41022	10.5 l	4100 g	1





JBL Koi Summer

Summer premium food for large koi

- Easy to digest premium special food for the warm season (from 20 °C water temperature).
- Bite-sized, floating granules for Koi of 30 cm upwards.
- Contains 5% high-quality spirulina algae and 5% gammarus shrimp. Available in resealable, opaque freshlock bags.
- Optimal protein/ fat ratio for perfect health.
- High concentration of vitamins and amino acids which promote better health.

Art. no.	Content	UP
40188	10 l	6



JBL Display Koi Summer 10 l (28x)

Summer food for koi in an attractive display

- Easy to digest premium food designed for the warm season (from 20 °C water temperature).
- Bite-sized, floating granules for Koi of 30 cm upwards.
- Available in resealable, opaque freshlock bags.
- Optimal protein/fat ratio for perfect health.
- 28 x 10 litre freshlock bag JBL Koi Summer.
- Floor space: 80 x 60 cm, height approx. 170 cm including header.

Art. no.	Content	UP
40189	28 x 10 l	1



JBL Koi Energi midi

Vital winter food for small to medium-sized koi

- Premium food for small to medium-sized koi of 10 to 35 cm at temperatures below 15°C.
- Sinking sticks, because koi withdraw into deeper water when temperatures drop.
- Vital for the prevention of diseases prevalent in spring.
- Stick sizes: 3-4 mm.

Art. no.	Content	Weight	UP
40306	1 l	600 g	6



JBL Koi Energi maxi

Essential winter food for large koi

- Premium food for large koi of 30 cm upwards at temperatures below 15 °C.
- Sinking sticks, because koi withdraw into deeper water when temperatures drop.
- Stick sizes: 5-6 mm.
- Vital for the prevention of diseases prevalent in spring.

Art. no.	Content	Weight	UP
41007	5.5 l	3300 g	1



The Zero-Risk Concept

1-2-3 algae free



2

Fight algae

Just add the appropriate anti algae agent into the pond water: **JBL AlgoPond¹**

¹Use biocides safely. Always read the product labels and product information prior to use!



1

Stabilise the water

JBL StabiloPond helps increase the mineral content to activate the anti-algae agents.



3

Limit nutrients

Dying algae release nutrients. Use **JBL PhosEx Pond** to remove them.



Of course, every pond owner would prefer to be able to solve all algae problems for the rest of the year by simply adding an anti-algae agent to the pond water. At the same time, though, practically every pond enthusiast has found out by experience that this does not work.

JBL has developed a 3-step, scientifically tested concept that permits ponds to also function without algae problems permanently.

The right sequence and completion of all 3 steps are needed for permanent success in solving algae problems in ponds.

If, contrary to expectations, the application was not successful, you can consult the JBL online pond lab (www.jbl.de/pondlab), which inquires systematically as to the problems and the measures taken. The diverse tests that JBL has subjected this concept to were all so successful that they have decided to offer a money-back guarantee!



JBL StabiloPond Basis
Basic care product for all garden ponds

- The absolutely vital basis for successful pond care without algae problems.
- Creates a natural biotope-like climate in the pond, with stable KH, GH and pH levels suitable for the species.
- Is the life insurance for fish and other pond life.
- Adds vital materials to the pond.
- Simply scatter in 100 g granulate per 1000 l pond water.

Art. no.	Content	Range	UP
27310	0.25 kg	2500 l	6
27311	1 kg	10000 l	1
27312	2.5 kg	25000 l	1
27313	5 kg	50000 l	1
27314	10 kg	100000 l	1



JBL StabiloPond KH
pH-balancer for garden ponds

- balances the pH level (acid content) to optimum 7.5-8.5 by increasing carbonate hardness (KH).
- Prevents fish losses from algae bloom.
- Absorbs heavy metals and promotes the breakdown of toxic ammonia.

Art. no.	Content	Range	UP
27317	0.25 kg	2500 l	6
27318	1 kg	10000 l	1
27319	2.5 kg	25000 l	1
27320	5 kg	50000 l	1
27321	10 kg	100000 l	1



JBL OxyPond
Highly active oxygen for garden ponds

- Active oxygen for a steady supply of oxygen, particularly important for procedures consuming a lot of oxygen such as fighting algae or reducing mud levels.
- Fast and effective increase in oxygen levels.
- Effective against pond "turnover".
- Easy to use: simply scatter the granules onto the pond.
- Particularly vital in high summer temperatures.

Art. no.	Content	Range	UP
27335	0.25 kg	5000 l	6
27336	1 kg	20000 l	1
27337	2.5 kg	50000 l	1



JBL FilterStart Pond
Filter bacteria to activate pond filters

- Shortens biological running-in time to just a few days.
- Immediately absorbs ammonium-ammonia and nitrite.
- Bacteria cultured on special host substance to simply scatter in filter.
- Purely biological product – no chemicals.

Art. no.	Content	Range	UP
27325	0.25 kg	10000 l	6



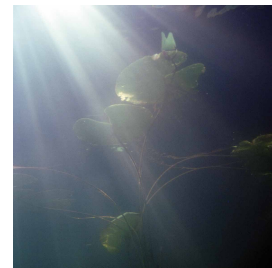


JBL AlgoPond Sorb

Algae blocker by physical means: Reduces algae growth using "sunglasses effect"

- Acts as a light filter, thereby depriving the algae of part of their essential light radiation.
- A light yellowish discoloration of the water is an indication of effective treatment.
- Does not reduce pH or hardness levels.

Art. no.	Content	Range	UP
27362	0.5 l	10000 l	3
27363	2.5 l	50000 l	1

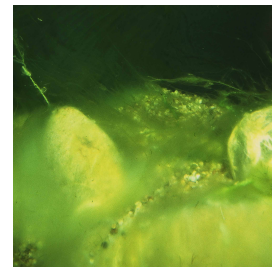


JBL AlgoPond Forte

General algaecide (against all kinds of algae)

- Removes excess algae growth.
- Reliably prevents all kinds of algae (even mixed species).
- Free of copper.

Art. no.	Content	Range	UP
27405	0.25 l	5000 l	6
27406	0.5 l	10000 l	3
27407	2.5 l	50000 l	1
27408	5 l	100000 l	1



YouTube

Use biocides safely. Always read the labelling and product information before use.



JBL AlgoPond Direct

Reliably eliminates blanket weed

- Quickly eliminates blanket weed using active oxygen.
- Problem-free application: simply scatter over the algae bed.
- The oxygen attacks the algae cells and destroys them.
- Effect is immediate, algae perish within hours.
- 30-50 g JBL AlgoPond Direct per 1000 l pond water.
- 30 g dosage for 800 l, 50 g dosage for 1000 l.

Art. no.	Content	Range	UP
27355	0.25 kg	8000 l	6
27356	1 kg	30000 l	1
27357	2.5 kg	80000 l	1



YouTube

Use biocides safely. Always read the labelling and product information before use.



JBL AlgoPond Green

Eliminates Green Water problems (floating algae)

- Green water in a pond is caused by floating algae, which are killed off by JBL AlgoPond Green.
- The dead algae are decomposed by bacteria in the pond.
- There are no detrimental effects on the biological balance of the pond.
- The water should be checked with JBL PondCheck prior to application to make sure the KH is at least 4 ° dKH.

Art. no.	Content	Range	UP
26064	0.25 l	5000 l	6
26065	0.5 l	10000 l	3
26066	2.5 l	50000 l	1
26067	5 l	100000 l	1



YouTube

Use biocides safely. Always read the labelling and product information before use.

How JBL AlgoPond Direct* works

- 1-3. The interspersed powder sinks to the bottom or onto the algae deposits.
- 4-5. The effect already sets in a few minutes later and causes the algae to break loose from the bottom.
6. The algae float to the top and can be collected e.g. with a dip net.

*Use biocides safely. Always read the labelling and product information before use.



Care products > Limiting nutrients



YouTube

JBL PhosEX Pond Filter

Phosphate-eliminating granulate, prevents algae

- Eliminates the basic nutrients of all types of algae, preventing the growth of unwanted algae.
- Significant reduction of high phosphate levels after only 24 hours.
- Effective for about 3 months.
- For all pond filters with filter material container.
- Includes net bag for individual dosage.
- Does not release aluminium or other undesired substances.

Art. no.	Content	Range	UP
27373	0.5 kg	5000 l	1
27374	1 kg	10000 l	1
27375	2.5 kg	25000 l	1



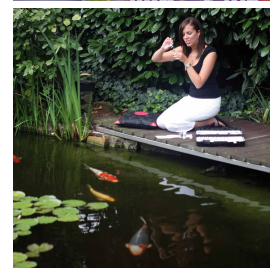
YouTube

JBL PhosEX Pond Direct

Eliminates phosphates.

- Reliably adsorbs the nutrient phosphate which has been dissolved in the water. A brownish water discoloration indicates its effectiveness.

Art. no.	Content	Range	UP
27393	0.25 l	3000 l	6
27394	0.5 l	10000 l	3
27395	2.5 l	50000 l	1
27396	5 l	100000 l	1



JBL SediEX Pond

Breaks down mud effectively and biologically

- Granular food with live bacteria to scatter onto the pond to mineralise pond sludge.
- Note: 2-component system comprised of bacteria and active oxygen.
- Creates healthy pond water and prevents rotting processes on the floor of the pond.
- Helps avoid fish losses.
- Reduces algae growth by absorbing excess nutrients.

Art. no.	Content	Range	UP
27330	0.25 kg	2500 l	6
27331	1 kg	10000 l	1
27332	2.5 kg	25000 l	1



JBL BactoPond

Biological pond cleaner

- Creates healthy, clean pond water by biological breakdown of pollutants.
- Live pond bacteria absorb proteins, ammonium/ammonia and nitrite.
- Helps avoid fish loss.
- Reduces algae growth by absorbing excess nutrients.
- Liquid product: 40 ml / 700-800 l pond water.

Art. no.	Content	Range	UP
27326	0.25 l	5000 l	6
27327	0.5 l	10000 l	3
27328	2.5 l	50000 l	1

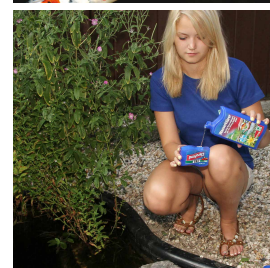


JBL CleroPond

Water clarifier

- Removes all types of clouding quickly and reliably.
- The flocculation causes cloudiness to disappear to where the flocculated particles can then be removed by the filter.

Art. no.	Content	Range	UP
27350	0.5 l	10000 l	3
27351	2.5 l	50000 l	1



Care products > Plant care

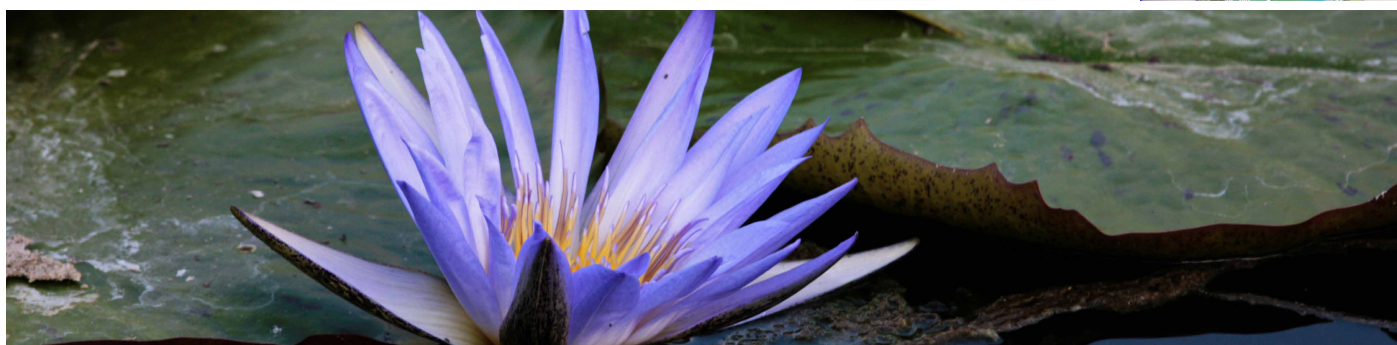


JBL FloraPond

Fertiliser balls for pond plants

- Fresh growing power for all lilies and marsh plants in the garden pond.
- Special clay pellets loaded with the main nutrients and trace elements.
- For a sustainable long-term supply in a planted pond.
- Provides sufficient nutrients for approx. one year.
- Promotes the growth of plants, not algae.

Art. no.	Content	Diameter	UP
27380	8 Pieces	30 mm	6



What kind of problem does your pond fish exhibit?

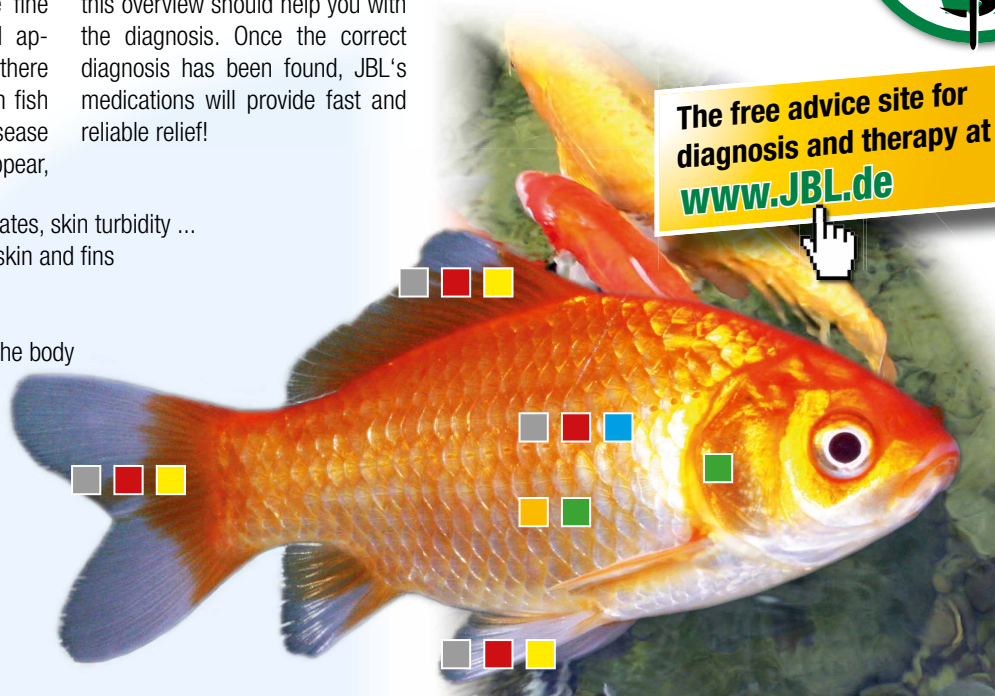


If the water parameters are fine and the fish are being fed appropriately for their species, there shouldn't be any trouble with fish diseases. However, if disease symptoms do happen to appear,

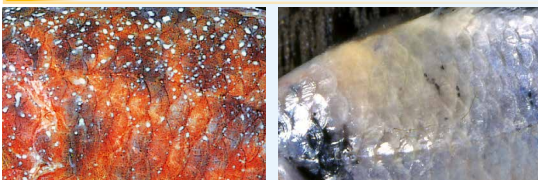
this overview should help you with the diagnosis. Once the correct diagnosis has been found, JBL's medications will provide fast and reliable relief!

The free advice site for diagnosis and therapy at www.JBL.de

- White little dots, more ciliates, skin turbidity ...
- Fungal infestation of the skin and fins
- Fins rot off
- Carp lice, anchor worms
- Ulcers, open wounds on the body
- Skin and gill flukes



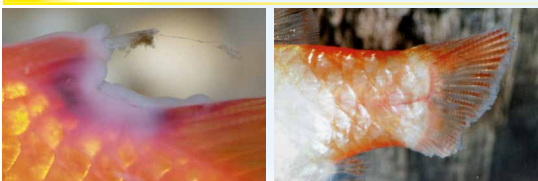
White little dots, more ciliates, skin turbidity ...



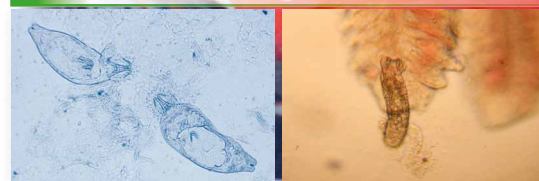
Carp lice, anchor worms



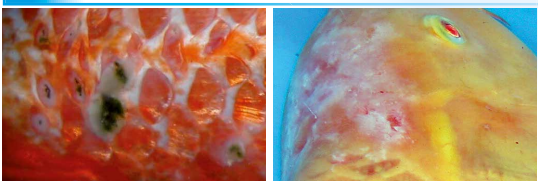
Fins rot off



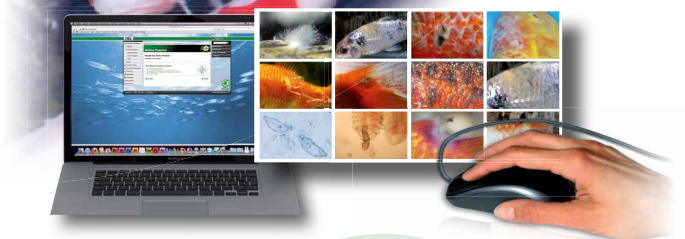
Skin and gill flukes



Ulcers, open wounds on the body



Fungal infestation of the skin and fins



JBL Online-Hospital

Your reliable assistant for diagnosing and treating pond fish diseases. More than 500 photos help you identify fish diseases and obtain advice for treatment. You can use the photos to diagnose directly, enter a search term or click through an identification key.



JBL ArguPond Plus®

Against carp lice & anchor worms

- Treatment against parasitising crustaceans like carp lice (Argulus), anchor worms (Lernaeae) and gill lice (Ergasilus).
- Do not use below 18 °C.
- Dosage: 40 ml for 800 l pond water.
- A one-time dose tends to be sufficient for treatment.
- Cannot be tolerated by invertebrates (insect larvae) and crayfish.

Art. no.	Content	Range	UP
27132	0.5 l	10000 l	3
27134	5 l	100000 l	1

*For questions on risks and side-effects please read the package insert and ask your veterinary or pharmacist.



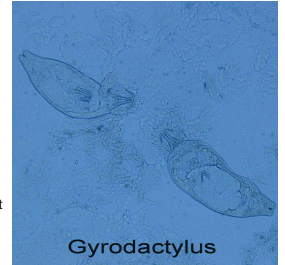
JBL GyroPond Plus®

Against skin and gill flukes and tapeworms

- Highly effective remedy for gill flukes (Dactylogyus), skin flukes (Gyrodactylus) and tapeworms (Cestoda) in pond fish.
- Catfish and sheatfish can react sensitively.
- Dosage: 40 ml for 800 l of pond water with tapeworms, 40 ml for 400 l pondwater with skin- and gill flukes.
- Oviparous gill flukes require double treatment.

Art. no.	Content	Range	UP
27136	0.5 l	10000 l	3

*For questions on risks and side-effects please read the package insert and ask your veterinary or pharmacist.



Gyrodactylus

JBL FuraPond®

Medication against internal and external bacterial infections

- Fast and effective treatment in the initial stage of ulcers, fin rot, "popeye" dropsy occurring in spring. Effective against bacteria of the strains, Aeromonas, Pseudomonas, Columnaris, Flexibacter, Streptococci and others. Very well tolerated, also by crayfish. It is absorbed quickly through the gills and can be traced in all organs after only a few minutes. The effective ingredient, sodium nifurstyrenate, acts faster and more effectively than antibiotics.

Art. no.	Content	Range	UP
27180	24 Tabl.	4200 l	3

In Germany, drugs with the active ingredient, sodium nifurstyrenate, are prescription drugs and may not be advertised by pictures.



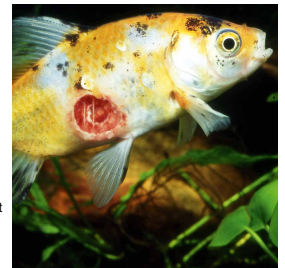
JBL Ektol bac Pond Plus®

Medication against bacterial infections

- Quickly and reliably treats ulcers, fin rot, popeye and early stage dropsy which often occur in spring.
- Effectively treats bacteria of the strains Aeromonas, Pseudomonas, Columnaris, Flexibacter and others.
- Dosage: 40 ml for 800 l of pond water.

Art. no.	Content	Range	UP
27141	0.5 l	10000 l	3
27142	2.5 l	50000 l	1
27143	5 l	100000 l	1

*For questions on risks and side-effects please read the package insert and ask your veterinary or pharmacist.



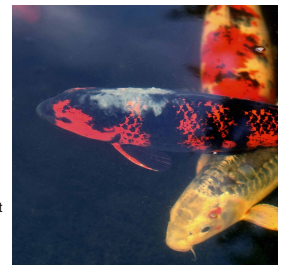
JBL MedoPond Plus®

Against white dot disease and fungal infections

- Reduces ectoparasites such as "white dots" and turbidity of the skin (e.g., costia, trichodinella and chilodinella) quickly and effectively.
- Helps fight fungal infections reliably.
- Dosage: 40 ml for 800 l pond water.
- Does not contain copper.

Art. no.	Content	Range	UP
27144	0.25 l	5000 l	6
27145	0.5 l	10000 l	3
27146	2.5 l	50000 l	1
27147	5 l	100000 l	1

*For questions on risks and side-effects please read the package insert and ask your veterinary or pharmacist.

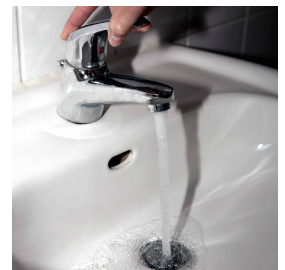


JBL Biotopond®

Treats pond water quickly and adequately for fish

- Protects gills, skin and fins through organic protective colloids and nourishes with aloe vera.
- Poisonous heavy metals such as copper, lead, zinc and others will be neutralized permanently.
- Dangerous chlorine and chloramine from tap water are eliminated quickly and completely.
- JBL Biotopond® makes iron plant available and supports plant growth.

Art. no.	Content	Range	UP
26060	0.25 l	5000 l	6
26061	0.5 l	10000 l	3
26062	2.5 l	50000 l	1
26063	5 l	100000 l	1



JBL AccliPond®

Activates resistance

- Facilitates readiness to spawn and the health of fish.
- For use following the implementation of medication: JBL AccliPond® activates immunity and increases the vitality of pond fish by adding valuable plant extracts and vitamins.
- JBL AccliPond® ensures a stress-free transport of fish and supports the introduction of fish into the pond.
- With iodine and folic acid.

Art. no.	Content	Range	UP
26070	0.5 l	10000 l	3
26071	5 l	100000 l	1



Using JBL technology for crystal-clear water!



Green water in the pond (caused by suspended algae) can be annoying, although this algae species can quickly and safely be eradicated with the JBL "1-2-3-algae-free" concept. Using the JBL ProCristal UVC water clarifier gives you an unobtrusive and permanent technical alternative for getting to grips with green water, both as it arises and after it has settled.

Not everybody likes water tests, but they are the only effective means of analysing pond water. With the JBL water tests, everyone – from the beginner, to the expert, right up to the scientist – can quickly and thoroughly test a pond. And remember, even clear water can contain harmful substances, which only a water test can detect prior to removal.



JBL ProCristal UV-C

High-performance water clarifier for garden ponds

- Eliminates green water (floating algae) and whitish cloudiness (bacteria) reliably and quickly, using germ-killing UVC radiation.
- UV light is an entirely physical agent. There are no harmful side effects.
- Reduces the germ load and reduces the risk of infection.
- To extend the performance, devices can be joined together by connecting pieces (JBL ProCristal QuickConnect).
- Very high effectiveness – water flow has a maximum layer thickness of 10 mm.
- Automatic burner switch-off when opening the device ensures safety.
- Optional hose connector tails and threads for PVC tube fittings.
- Strong 2 m rubber cable with protective earth wire and safety plug.
- 4 year warranty on casing.



JBL ProCristal UV-C 18 W

Water clarifier for garden ponds

Pond

recommended pump performance	Cloudiness		Partial degermination	
	l	l/h	l	l/h
	2000 till 4000	2000 till 4000	10000 till 15000	2000 till 4000

Art. no.	Performance	Length	UP
60367	18W	55 cm	1



JBL ProCristal UV-C 36 W

Water clarifier for garden ponds

Pond

recommended pump performance	Cloudiness		Partial degermination	
	l	l/h	l	l/h
	4000 till 8000	2000 till 4500	20000 till 30000	2000 till 4000

Art. no.	Performance	Length	UP
60368	36 W	75 cm	1

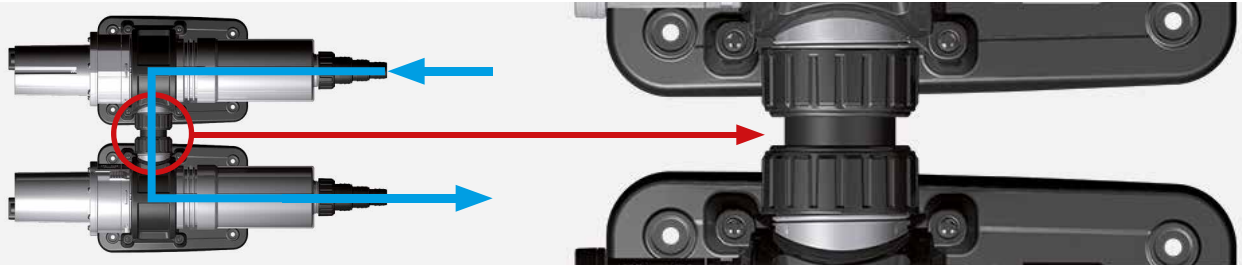


JBL ProCristal UV-C QuickConnect

Quick release connector for JBL ProCristal UV-C water clarifier

- Connects 2 water clarifiers to increase the total output.
- Simply screws onto the connecting thread.
- JBL ProCristal UV-C QuickConnect fits on all JBL ProCristal UV-C devices.
- Contents: 1 quick release connector to connect two devices.

Art. no.	UP
60369	1



JBL Replacement lamp UV-C

High quality replacement lamp for JBL ProCristal UV-C and other UV-C devices.

- 18, 24, 36 und 55 Watt models equipped with 2G11 connector.
- 5, 9 and 11 watt models equipped with G23 connector.
- Also compatible with all former JBL UV-C devices.
- Never touch UV-C lamps with bare hands as this reduces the service life of the lamp.

Art. no.	Performance	UP
60305	5 W	1
60306	9 W	1
60307	11 W	1
60308	18 W	1
60361	24 W	1
60309	36 W	1
60362	55 W	1

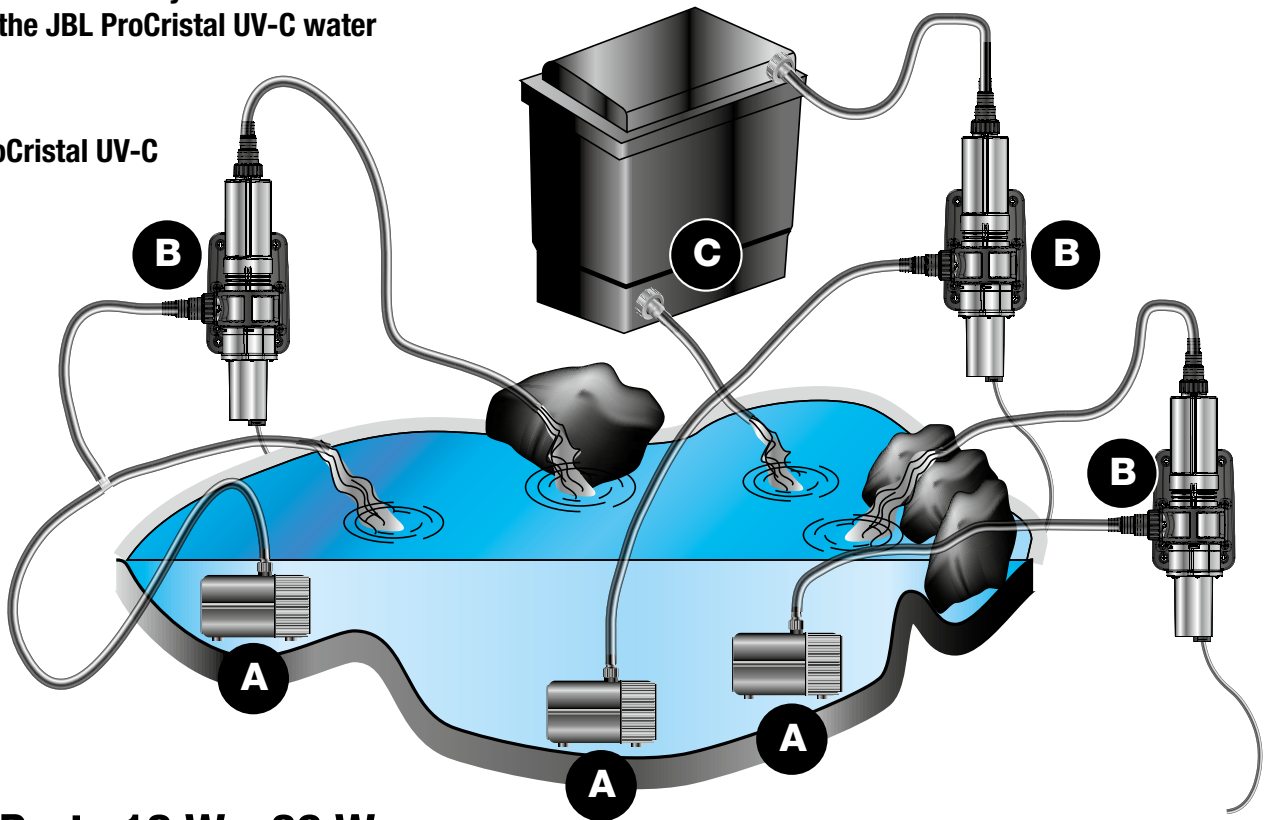


JBL ProCristal UV-C

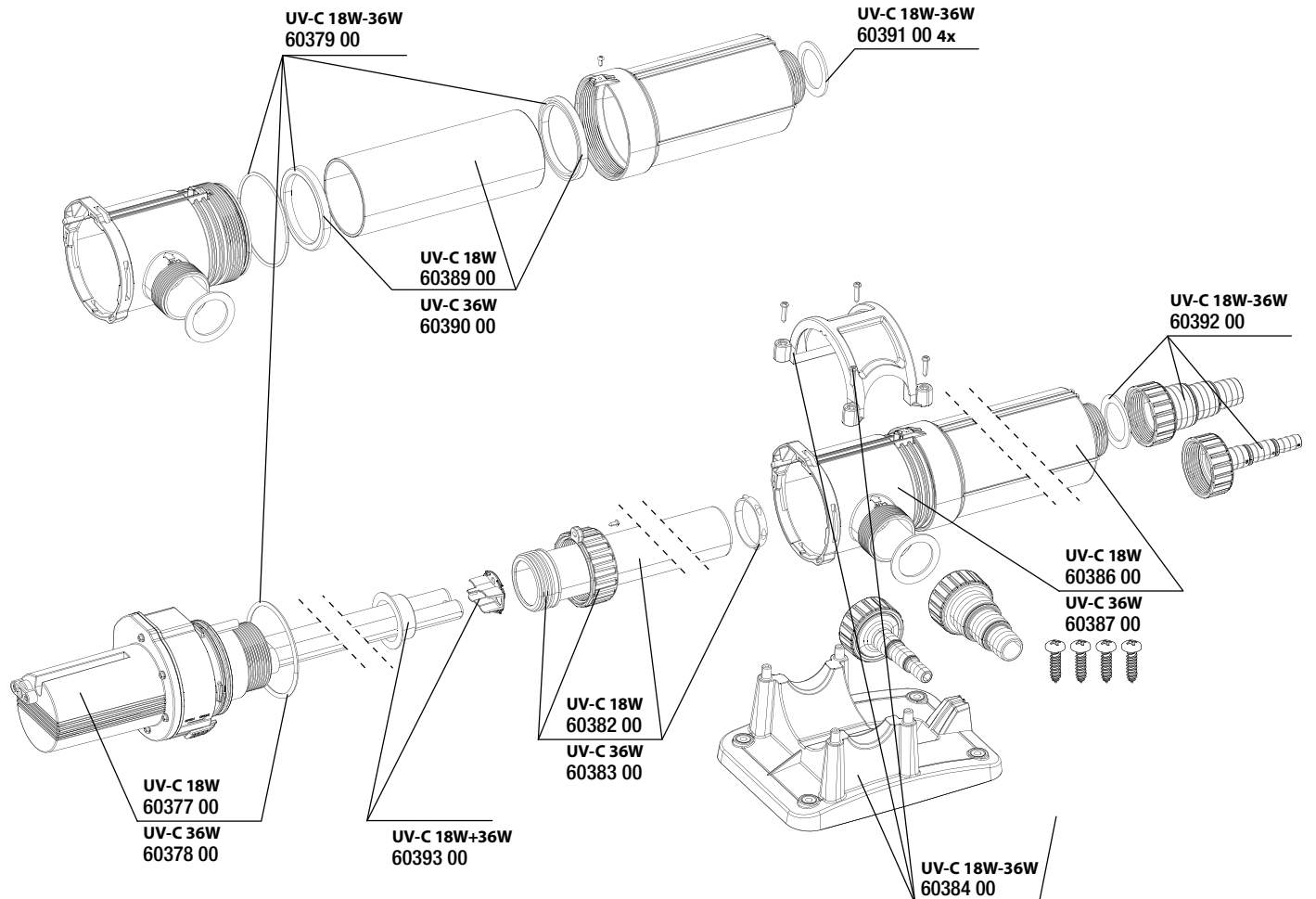
Use in a garden pond

Crystal-clear and healthy water in the pond with the JBL ProCristal UV-C water clarifier.

- A - pump
- B - JBL ProCristal UV-C
- C - filter



Spare Parts 18 W - 36 W





JBL PondOxi-Set

Aerating set for garden ponds

- Consists of: new powerful membrane air pump (200 l/h), 10 m air tube and new conical long lasting aerator stone.
- With floater at the tube for professional positioning 30 cm underneath the water surface.
- Prevents lack of oxygen in hot and cold weather.
- In conjunction with an Ice Free, prevents pond freezing over.

Art. no.	Performance	Watt	UP
28013	200 l/h	3 W	1



JBL Silicon tubing

On reel, transparent, 4/6 mm

- Extremely long life.
- 4/6 mm (internal/external) diameter.
- Not suited for CO₂.
- Silicone-like material.
- Contains no heavy metals.

Art. no.	Diameter	Length	UP
61119	4/6	100 m	100



JBL Aeras Micro Ball L

Ball shaped airstone

- From extra-fine quartz sand mixture for particularly fine air bubbles (hence the name „Micro“) Ball air stone with 40mm diameter.
- Especially suitable as air stone for garden ponds (see JBL Pond Oxi-Set and JBL Floater + AntiKink).
- In the aquarium the weight of the air stone keeps it on ground without extra weighting.

Art. no.	Diameter	UP
61491	40 mm	6

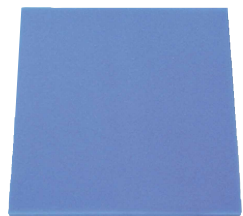
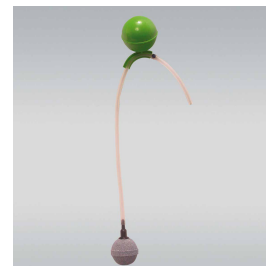


JBL Floater + AntiKink

Keeps the airstone in garden ponds at the right level

- An ingenious accessory for every air stone in a garden pond. Without this floater, the air stone will lie on the bottom or at the lowest point in the pond. This causes a mixing of the water layers, which is highly undesirable. Cooler, oxygen-rich water in the summer and warmer water needs to gather at the bottom in the winter.
- With kink protection for the hose.

Art. no.	For Ø	UP
28016	6 mm	1



JBL Fine Filter Foam

Foam block 50 x 50 x 2.5/5/10 cm

- NEW: Now also available in 2.5 and 10 cm thickness!
- Open-pored foam produced in a special high-pressure process.
- Neutral filter material for freshwater and saltwater aquariums.
- Can be cut to any shape required.
- Fine pored pre-filter material or long-term filter material.
- 30 PPI (pores per inch)

Art. no.	Height	UP
62562	2.5 cm	1
62561	5 cm	1
62563	10 cm	1



JBL Coarse Filter Foam

Foam block 50 x 50 x 2.5/5/10 cm

- NEW: Now also available in 2.5 and 10 cm thickness!
- Open-pored foam produced in a special high-pressure process.
- Neutral filter material for freshwater and saltwater.
- Can be cut to any shape required.
- Coarse pore size: biological long-term filter material.
- 10 PPI (pores per inch)

Art. no.	Height	UP
62565	2.5 cm	1
62560	5 cm	1
62566	10 cm	1





JBL Testlab Koi
Professional test laboratory for koi and garden ponds

- 11 different tests for comprehensive water analyses.
- pH 3,0-10; pH 7,4-9,0; KH; GH; ammonium / ammoniac NH_4/NH_3 ; nitrite NO_2 ; nitrate NO_3 ; phosphate PO_4 sensitive; phosphate PO_4 , KOI HIGH RANGE; oxygen O_2 .
- Waterproof plastic case with 6 glas cuvettes, syringes, dosage spoons, thermometer, ballpoint pen and paper for taking notes.
- A compensation system allows more precise color comparison.

Art. no.		UP
28020		1



JBL PondCheck
Pond water quick test

- Very easy to use, requires no prior knowledge – results in just seconds.
- Contains a pH test set and a KH test set.
- Suffices for 50 measurements.
- Necessary before starting the JBL 1-2-3 algae-free concept.
- The result shows whether the water is stable or whether StabiloPond Basis/KH needs to be added.

Art. no.	Content For	UP
28015	50 Tests	3



JBL Phosphate Test Kit PO_4 for koi
Detects the algal nutrient phosphate in ponds.

- For 50 tests.
- Only 2 reagents for quick and easy handling.
- Due to the higher feeding needs in koi ponds this test also displays high values of up to 10.0 mg/l.
- Scale: <0.1; 0.25; 0.5; 1.0; 1.5; 2.0; 3.0; 5.0; 10.0.
- Includes compensation system, color chart, syringe, 2 glas cuvettes and dosage spoon.

Art. no.	For	UP
28021	50 tests	3



JBL pH Test 3.0-10.0
Fast test to measure acidity of water

- For approx. 80 measurements.
- Only 4 drops per test.
- For fresh water and salt water.
- Graduation: 0.5 pH increments.
- Colour scale with 14 colours from red to yellow and green to violet.

Art. no.	For	UP
25342	80 tests	6
25343	Refill	1



JBL KH Test
Carbonate hardness test

- Recommended level for fresh water: 4-8° dKH.
- 1 drop = 1° dKH.
- Colour change from blue to yellow.
- The number of used drops = level of carbonate hardness.
- For this reason this test does NOT require a color scale.
- The most important text in aquatics since the KH stabilizes the pH value.

Art. no.		UP
25360		6
25361	Refill	1



JBL Oxygen Test O_2
Oxygen test

- Recommended oxygen content: 8 mg/at 25° C.
- Test providing accurate readings of oxygen levels from 1-10 mg/l in freshwater and marine tanks as well as garden ponds.
- Important when algae-removal preparations are used, as large amounts of oxygen are used when algae are eliminated.
- Recommended for use at night in densely planted aquariums, when large amounts of O_2 are absorbed.

Art. no.	For	UP
25406	50 tests	3
25407	Refill	1



JBL Copper Test Cu
Copper test

- Recommended level for oodinium treatment: 0.3 mg/l Cu
- Accurate test for determining the copper content in freshwater and saltwater tanks. Range of values:< 0.1; 0.1; 0.2; 0.3; 0.45; 0.6; 0.8; 1.2; 1.6 mg/l.
- Can also be used to check tap water, which should not contain any copper.
- Helpful in administering medications and preparations containing copper, as the copper content should never exceed 0.3 mg/l, whilst insufficient doses will not result in a cure.

Art. no.	For	UP
25404	50 tests	3
25405	Refill	1





JBL EasyTest 6in1
6-fold test strips for quick water testing

- 50 test strips.
- NEW: With a chlorine test (disinfectant in tap water).
- pH test from 6.4 to 9.0 (acidity of the water).
- KH test from 0 to 20 °dKH (pH stability of the water).
- GH test from <1 to > 21 °dGH (general hardness).
- Nitrite (NO₂) from 0 to 10 mg/l (poisonous nitrogen compound).
- Nitrate (NO₃) from 0 to 250 mg/l (cause of algae).

Art. no. Content For

25339 50 tests

UP

6



YouTube



JBL ProScan
Multi water test with evaluation by means of smartphone app

- Contains 24 analysis strips (GH, KH, pH, nitrite, nitrate, chlorine and for the calculation of CO₂) with matching JBL ProScan ColorCard.
- The colour chart serves as a reference when scanning the analysis strip.
- The result is evaluated and, where necessary, instructions are displayed to show how to optimize the water values.
- The appropriate app is available free of charge.

Art. no. Content

25420 24 Tests

UP

5



JBL ProScan Recharge
Refill test strips for JBL ProScan

- 24 analysis strips for digital evaluation with the JBL ProScan app.
- These analysis strips are specially designed for the JBL ProScan app.
- They can only be evaluated with the colour reference chart in the JBL ProScan and the free JBL ProScan app.

Art. no. Content

25421 24 Tests

UP

6





JBL Pond Thermometer
Floating pond thermometer

- Very precise indication of all water temperatures up to 50 °C.
- With a 5 m long, unobtrusive black nylon cord to pull the thermometer easily out of the pond.
- The pond water temperature is important to monitor the oxygen content. Warm water absorbs less oxygen.
- 20 cm long thermometer in inconspicuous blue.

Art. no.		UP
28011		1



JBL ProScape Cleaning Glove
Cleaning glove for aquarium glass

- Cleans aquarium glass easily.
- Reaches into all nooks and corners of the aquarium.
- Removes algae from leaves of plants and decorative material.
- Cleans technical equipment and pump parts.

Art. no.		UP
61379		6



JBL Pond Fish Net, coarse
Robust pond fishing net in 2 sizes

- 30,5 x 20,5 cm coarse net with telescopic handle 90 cm.
- 35 x 30 cm coarse net with telescopic handle 190 cm.

Art. no.	Length	Width	UP
28705	90 cm	30.5 cm	1
28701	190 cm	35 cm	1



JBL Pond Fish Net, fine
Fine pond fishing net in 2 sizes

- 30.5 x 20.5 cm fine net with a telescopic handle 90 cm.
- 35 x 30 cm fine net with a telescopic handle 190 cm.

Art. no.	Length	Width	UP
28706	90 cm	30.5 cm	1
28702	190 cm	35 cm	1



Achieve optimum sales placement of JBL Pond Products. Let us help you.

JBL has created a large selection of presentation options for its pond products. This way, JBL helps you with your product presentation by providing professional support ranging from shelf presentation or a comprehensive sales display in grid shelving units to sales islands and special placement and secondary placement displays. Merchandising through your product presentation couldn't be easier. Our displays are oriented to standard sizes, so that they can be integrated perfectly into any sales area.

Video presentations can help customers better understand complex products right at the shelf without a need for additional staff. Attractive advertising materials enhance sales support directly at the point of sale.

"What can we do for you?," our field service team asks you. Contact us and we will prepare a complete product range presentation for optimum sales.



JBL offers you attractive product presentation that is ideally suited for the space you have available and fits your needs.

Don't hesitate - contact us directly! We will assist you with a product presentation concept tailored to your needs. Optimise your sales, maximise your revenue with JBL products.



JBL Catalogue 2016
Colour catalogue of all aquarium and terrarium products

- Describes all JBL aquarium and terrarium products in words and pictures.
- Over 1000 photos.
- With information pages: feeding tables, fish disease charts, CO₂ chart etc.
- With preview and registration form for the upcoming JBL Expedition.

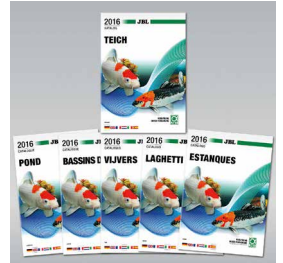
Art. no.	Language	UP
97462	DE/EN/ FR/NL/IT/ ES	1



JBL Pond product catalogue 2016
Full colour catalogue of all pond products

- Describes all JBL products for garden ponds in words and pictures.
- Over 200 full colour photos.
- With information pages: new products, advantages of JBL packaging, ways of presentation, koi-food concept, advantages of JBL pond fish food, fish diseases, use of UV-C and JBL expeditions.

Art. no.	Language	UP
97463	DE/EN/ FR/NL/IT/ ES	1



JBL Pond Folder 1-2-3 Algae-Free
Brochure on how to solve algae problems in ponds

- Coloured brochure of 20 pages.
- A5 format.
- Explains the JBL 1-2-3 Algae-Free concept that leads to ponds that are free of algae – with money-back guarantee.

Art. no.	Language	UP
97264	DE/EN/FR	25



JBL Folder Pond fish feeding
Brochure on how to feed pond fish

- Coloured brochure of 20 pages.
- A5 format.
- Answers all the questions related to feeding: How much? Which food? Ingredients, holiday time, seasons, which species eat which food.

Art. no.	Language	UP
97280	DE/EN/FR	25



Promotion Consumer > Samples pond



JBL PondCheck GRATIS
KH-Fast Test for Pond

- Sample - not meant for sale.
- 50 Tests.
- Indicates by color change from blue to yellow-orange whether there is carbonate hardness to stabilise the water.

Art. no.		UP
99014		12



Promotion Shop > Miscellaneous



JBL Report sheet water analysis
To fill in all water analysis results

- Contains the target values of all water parameters.
- Back of the sheet has solutions for problems at all water parameters.
- 11 columns provide space for measurements eleven days' long.
- DIN A4 format.

Art. no.	Language	UP
96064	DE/EN/ FR/NL/IT	1



JBL Note pad
Note pad with 50 pages.

- Size: 15 cm x 7 cm.

Art. no.	Content	Size	UP
95450	50 sheets	15x7 cm	10





JBL Fish Bags - XL
Extra large top-quality fish bags
 • Rounded heat-sealed corners on the bottom
 • Size: 30 cm x 60 cm.

Art. no.	Length	Width	UP
95423	60 cm	30 cm	25



JBL Rubber rings (rubber bands)
1 kg for (e.g.) fish bags of all sizes

Art. no.	Weight	Content	UP
95260	1000 g	~ 3000 pcs	1



JBL Carrier Bag
Strong plastic transport bag.
 • Size incl. carrier handles: approx.: 26 cm x 50 cm.

Art. no.	Length	Width	UP
95400	50 cm	26 cm	50



JBL dosing dispenser for AccliPond 500ml
To protect fish during transport
 • Added to the transport water this provides fish with wide-reaching protection against infections.
 • Doses per stroke 0.2 ml JBL AccliPond for 4 liters water.
 • Fits on the 500 ml JBL AccliPond bottle.

Art. no.			UP
95263			1



JBL Hanging strips 6 items
 • Provides a means for exhibiting up to 6 products (with a hanging hole) at variable locations.
 • Equipped with an eyelet on the upper end for hanging items up (ideal with an adhesive hook or s-shaped hook).

Art. no.			UP
97234			1



JBL Business Card Holder
Rack holder for cards
 • Can be hung directly on the rack. For approx. 25 cards (for example for the JBL ProScan cards)

Art. no.			UP
95140			1



JBL Reference card ProScan
Reference card for JBL ProScan and JBL PlanktonPur
 • With reference and QR code for JBL ProScan (front).
 • With reference and QR code for JBL PlanktonPur (back).
 • Can be fixed to the shelf by the card holder (95140) for displaying customer information.

Art. no.	Language		UP
99340	DE/EN/FR		30



Shop fitting > Shelf talker + Accessories



JBL Shelf talker
Shelf talker "New" for mounting on shelf

Art. no.		UP
97849		1



JBL Shelf strips for pond care
5 replacement strips for pond displays
 • Exclusively for plastic pond display (2012).
 • For green shelf panels, see Art. No. 9730700 Pond Shelf Strips (3-colour system).

Art. no.	Language	UP
97883	DE	1



JBL Shelf Tag - Ponds
Explains the JBL 1-2-3 Algae Free concept
 • A4 format. Printed on both sides with a hole for attachment to a rack.
 • Waterproof laminated.

Art. no.	Language	UP
97018	DE/EN	1



JBL Poster 1-2-3 algae free
Explains the JBL 1-2-3 algae Free concept
 • Laminated poster, approx. 1m long.

Art. no.	Language	UP
97313	DE	1

Shop fitting > Sticker



JBL Sticker (18x12cm) – from outside
Oval sticker
 • 18 x 12 cm
 • To be applied on outside.

Art. no.		UP
95011		1



Promotion > Miscellaneous



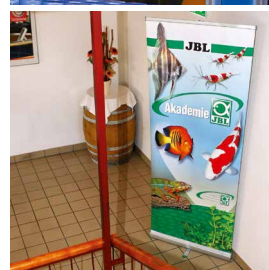
Video system
Screen for movies
 • For individual use by JBL sales representatives.
 • 16 : 9 screen.
 • Movies loaded via USB stick.

Art. no.		UP
97259		1



JBL Roll-Up
Quick set-up, rollable display.
 • Quick set-up wall, 1 x 2 m in size.
 • Individual design is possible.
 • Order can only be placed through the JBL Fan Shop on the JBL Homepage.
 • Can be set up by one person in 3 minutes.
 • Maximum delivery time of 2 weeks.

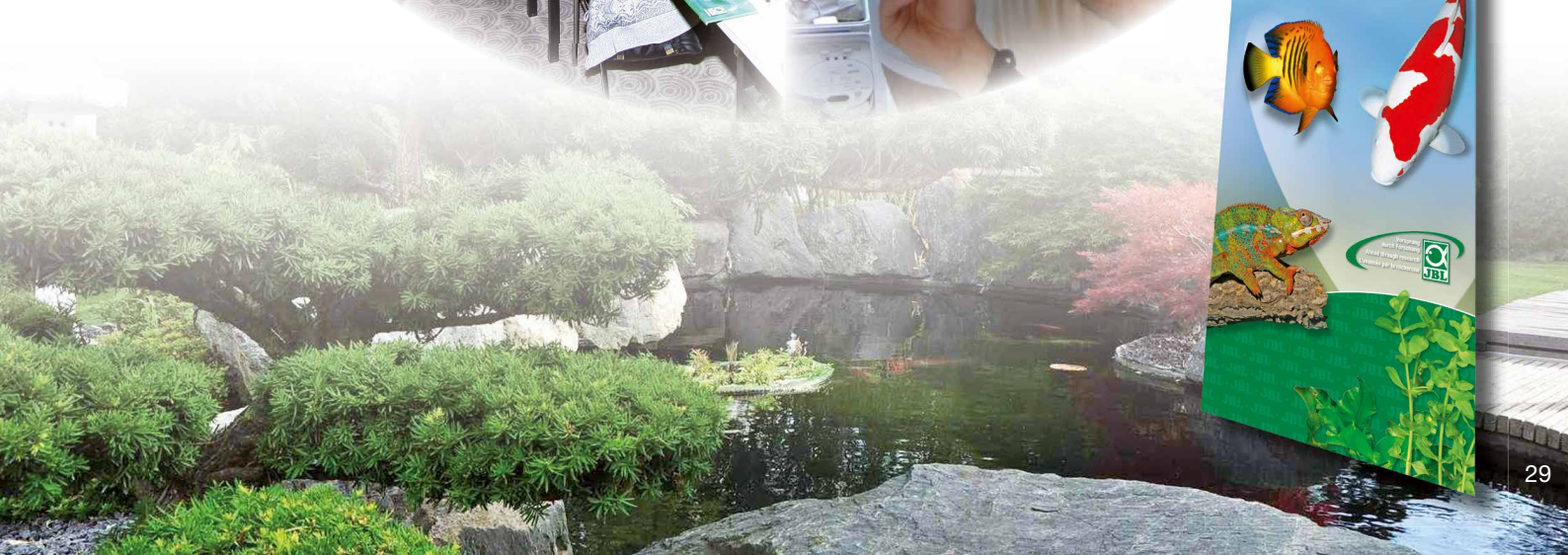
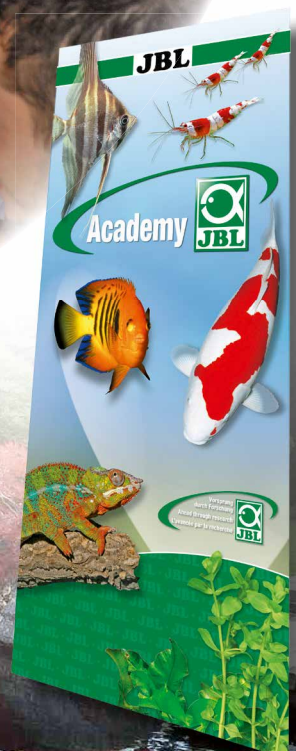
Art. no.	Width	Height	UP
97315	100 cm	200 cm	1



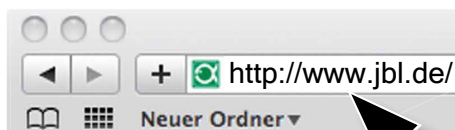
The JBL academy: practical and clear specialist training for you

The JBL academy team offers you a wide range of opportunities to gain or to deepen your expert knowledge. These vary from research expeditions to the tropical homelands of the ornamental fish and terrarium animals (www.jbl.de/en/expeditions), to specialist seminars right up to workshops for children at German lakes.

We place special emphasis on explaining the sometimes complex processes in a comprehensible way, and we always back up our message with practical demonstrations or experiments.



Why not visit us on the Internet and get to know JBL Online.



All the latest information on your hobby and JBL, 24 hours a day, 365 days a year; just a mouse-click away.

Navigation

Navigate safely and easily through the JBL website here. Information on keeping aquariums, terrariums and garden ponds - all just a mouse-click away.

FAQs and solutions to problems

Frequently asked questions - the answers are here.

Online lab

Our new interactive Online Lab for fast, reliable analysis of the water values of your aquarium.

JBL Online Hospital

Sick fish? The right diagnosis at the click of a mouse with JBL ONLINE HOSPITAL on your computer!

Product information

Interesting information on JBL products, facts, figures, background information.

And much more

Such as download options for JBL advice sheets, photo gallery, reports, e-cards ...



The free advice site for diagnosis and therapy at www.JBL.de

 [facebook.jbl.de](https://www.facebook.com/jbl.de)

JBL Online Lab

Fast, reliable analysis of your water measurements in only 4 steps. Problem-based or a full professional analysis for every type of water.

JBL Online Hospital

Sick fish? The right diagnosis at the click of a mouse with JBL ONLINE HOSPITAL on your computer! Search function
Picture-based diagnosis
Text-based diagnosis
Therapy

Experiencing nature means understanding nature



The JBL research team undertakes yearly expeditions to the home biotopes of ornamental fish and terrarium animals to explore and understand their habitats. Only then are we able to recreate these biotopes in aquariums and terrariums. This leads to breeding these animals, thus preventing the removal of species from the wild.

If you love nature and enjoy spending time surrounded by nature with like-minded people, then JBL expeditions are just the thing for you! Both on land but also snorkelling or diving in the water you will be given the opportunity to carry out first-hand research into aquarium and terrarium animals - in the jungle, in the desert and on the coral reef.

You only need a basic physical fitness, a strong connection to nature, the willingness to stay overnight in the outdoors and perhaps also a bit of luck to take part in a JBL expedition. Should there be more applications than available spaces, potential participants will be drawn on a lottery basis. Newly interested parties are always given priority over "repeaters".

www.jbl.de/en/expeditions



FORWARD THINKING · RELIABLE · LOYAL TO SPECIALIST RETAILERS

Joachim Böhme founded the company, JBL, in Ludwigshafen in 1960. Over a period of 56 years, the small family business has developed into one of the leading suppliers of the aquarium, terrarium and pond trade. Today JBL exports to over 65 countries and, with over 1000 articles, has one of the largest ranges of aquarium products in the world.

In the plant Neuhofen/Pfalz, where the expanding company has been located since 1984, production is focused on fish food and water care products.



JBL GMBH & CO. KG
DIESELSTRASSE 3
67141 NEUHOFEN
GERMANY

Phone:
Tel.: +49 6236 4180-0
Fax: +49 6236 4180-999
Export Sales:
Tel.: +49 6236 4180-200
Fax: +49 6236 4180-201

E-Mail: info@jbl.de Internet: www.jbl.de



facebook.jbl.de



9746410 V01